

Tella Firma Foundation in Tilt-up Wall Construction

Tella Firma elevated foundation system is an ideal solution for commercial tilt-up wall construction in areas with active or expansive soils. Wall panel design and installation is similar to traditional tilt-up wall installation. Walls are erected on concrete piers and void forms, using traditional construction methods, however there is no need for expensive soil remediation under the slab as in traditional slab-on-ground designs and installations.



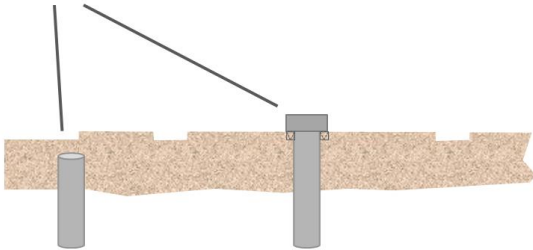
Tella Firma Slab Advantage

- Eliminates the need for expensive soil remediation.
- Heavy-load concrete piers are installed for exterior tilt-up wall panels and interior structural columns.
- Light-load concrete or steel helical piers are installed to carry the load of the foundation.
- Tilt-up panels can be formed and poured on the slab.
- Once panels are lifted into place and secured, the Tella Firma foundation is elevated.
- Elevated slab provides 'protective void' under slab to mitigate damage from active soils.

Step-by-Step Overview of Installation

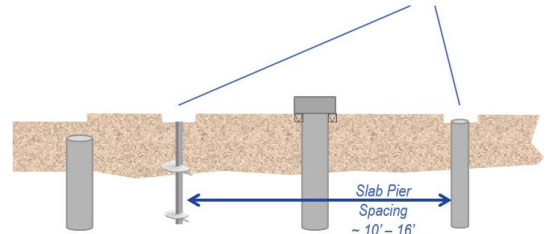
1. Heavy-Load Concrete Piers Installed

"Heavy" Piers
(for Tilt-up Wall and
Structural Columns)



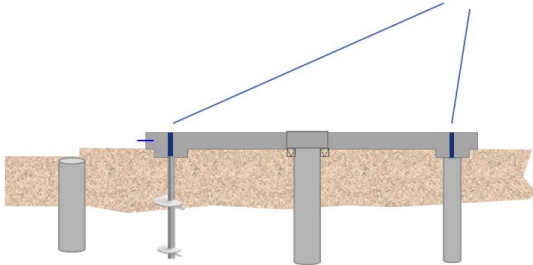
2. Light-Load Concrete or Helical Piers Installed

"Light" Slab Piers
(12" diameter Concrete
Or Steel Helical Piers)



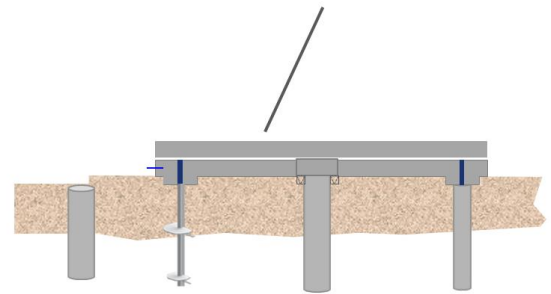
3. Slab Poured with Tella Firma Mechanisms

TELLA FIRMA
Lifting Mechanism

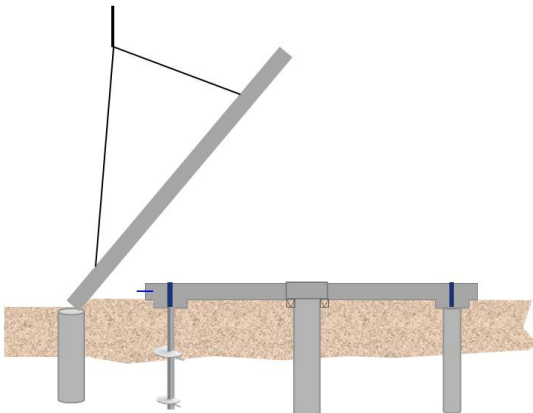


4. Tilt-Up Wall Panels Poured on top of Slab

Tilt-Up Wall Panel Poured
on Top of Slab



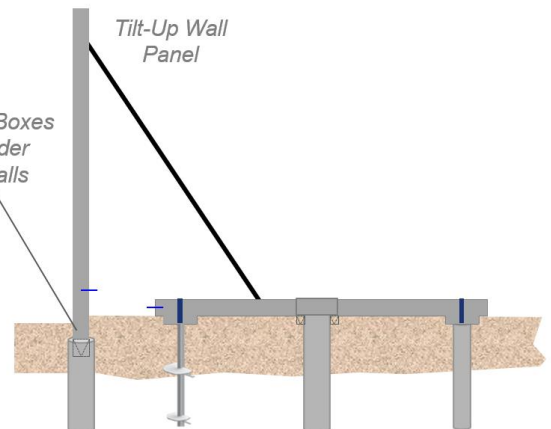
5. Tilt-Up Wall Panels Lifted into Place



6. Tilt-Up Wall Panel Held in Place with Braces

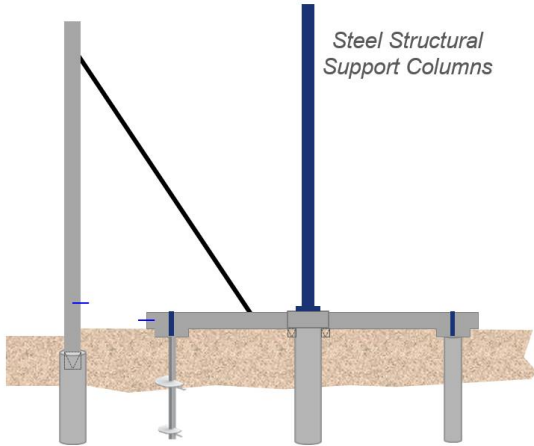
Tilt-Up Wall
Panel

Void Boxes
Under
Walls

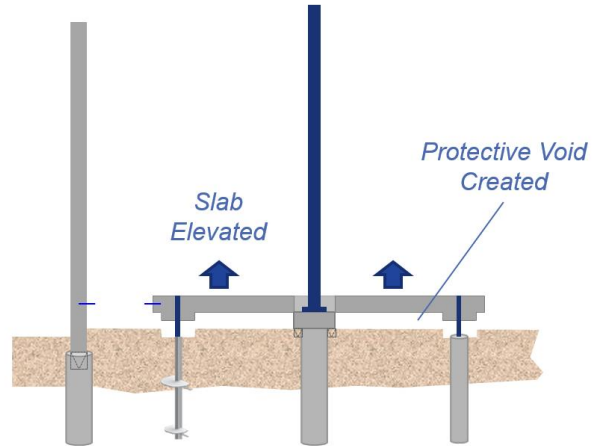


Step-by-Step Overview of Installation

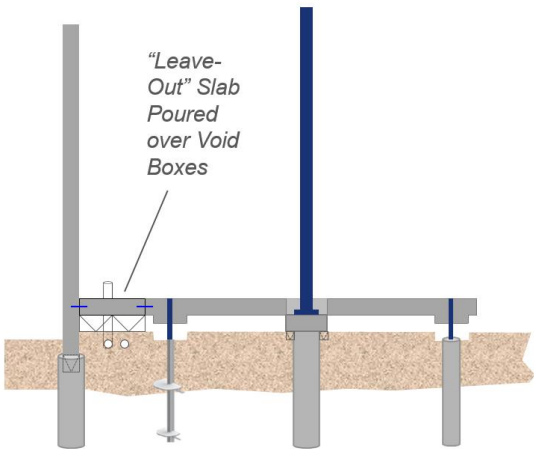
7. Interior Structural Steel Columns Installed



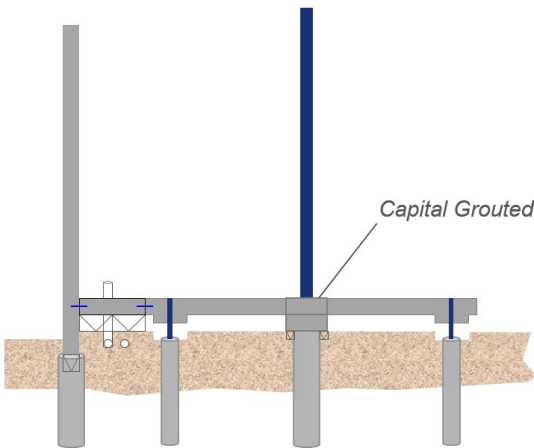
8. Tella Firma Slab Elevated Forming Protective Void



9. Perimeter "Leave-out" Poured over Void Boxes



10. Structural Column Void is Grouted





Tella Firma in Tilt-up Wall Construction

Release Date – April 1, 2017

© Tella Firma, LLC 2017

This product and implementation of suspended slabs using this product are protected by the following United States and Canadian Patents which are owned exclusively by Tella Firma, LLC. US Patents: 8458984, 8671627, 8407898, 8678712, 7823341 B2, 8069620 B2. Canadian Patent: 2628422

For more information contact:



1701 N. Collins Blvd, Suite 100
Richardson, TX 75080

www.TellaFirma.com

Phone: 817.348.9100