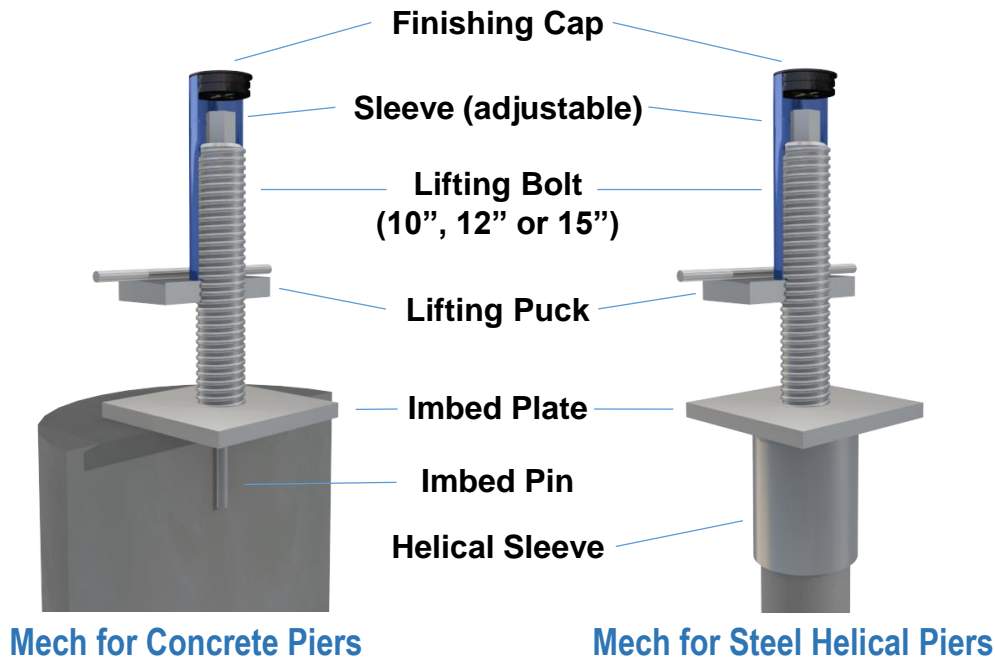


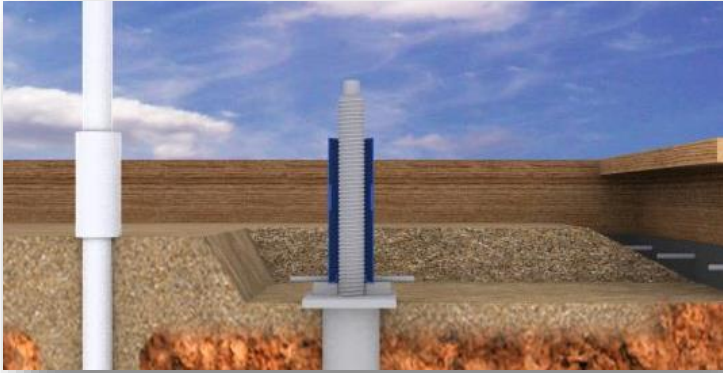
The Tella Firma Lifting Mechanism is the enabling component in a proven and patented process of elevating a slab-on-grade foundation above the ground to create a protective void between the slab and soil. This innovation isolates the foundation, helping to protect it from damaging soil swells, contractions, and movements.



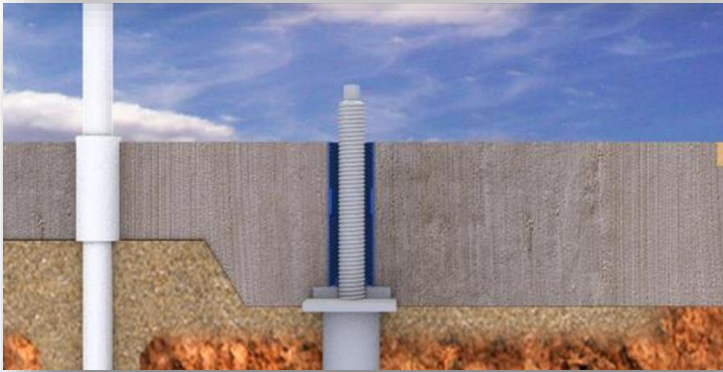
Tella Firma Lifting Mechanism can be configured for either traditional concrete piers or for modern steel helical piers.



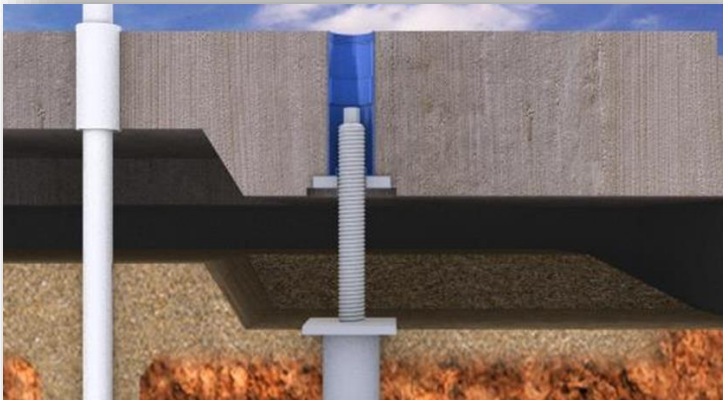
Tella Firma Lifting Mechanisms are designed, tested and manufactured to meet or exceed design requirements utilizing state-of-the-art manufacturing processes and quality materials.



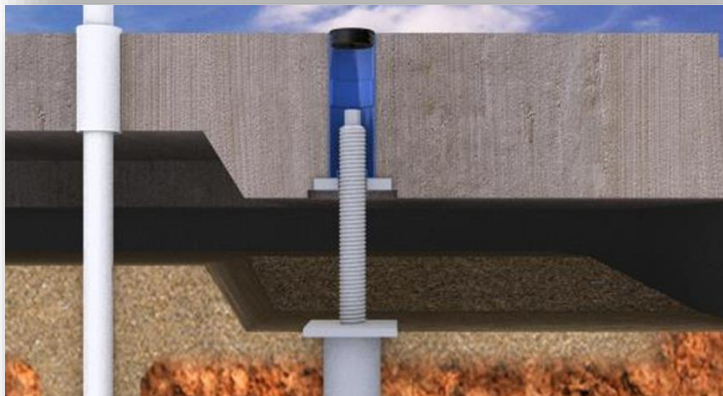
1. The Lifting Mechanism is set on the pier during slab make up. The slab is thickened at the pier for added strength.



2. The concrete is poured. The plastic sleeve keep concrete out of the mechanism thread area



3. The slab is raised to the proper height by turning the bolt. The protective void allows for soil expansion



4. The plastic finishing cap is installed and mortar is placed on top of the cap to match to the slab floor finish